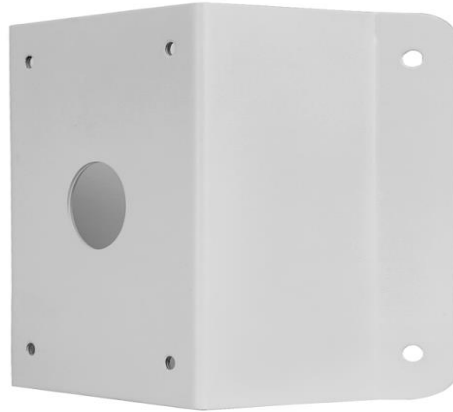


PTZ Dome Corner Mount

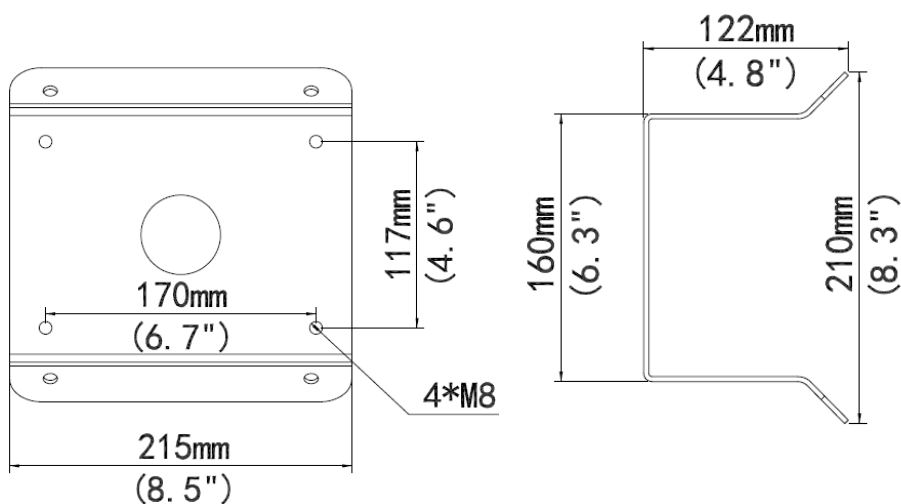
B-UC08-A-IN



Specifications

Bracket	B-UC08-A-IN
Application	Indoor or outdoor, PTZ Dome Corner installation
Dimensions	215mmx210mmx122mm(8.5" x 8.3"x 4.8")
Weight	1.87kg(4.1lb)
Material	Steel

Dimensions



www.uniview.com/uniarch

©2021 Zhejiang Uniview Technologies Co.,Ltd. All rights reserved.

*Product specifications and availability are subject to change without notice.